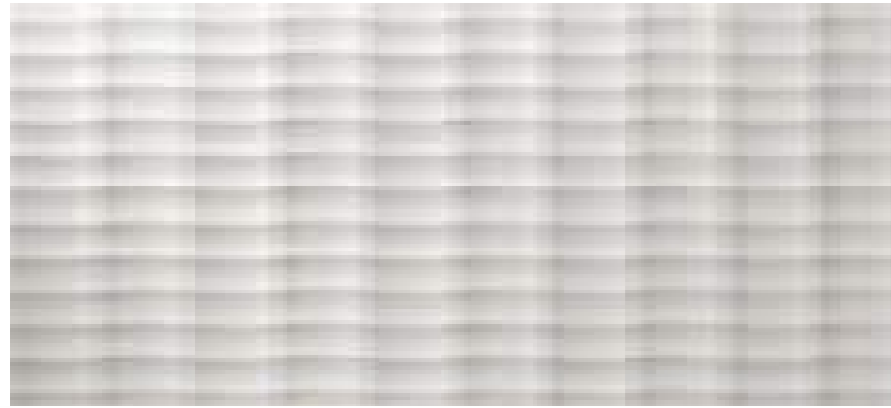


3D Plot ✓ X ↻ 20%

3D Plot White Matt 110
50x110 cm - 19⁵/₈"x43¹/₄"



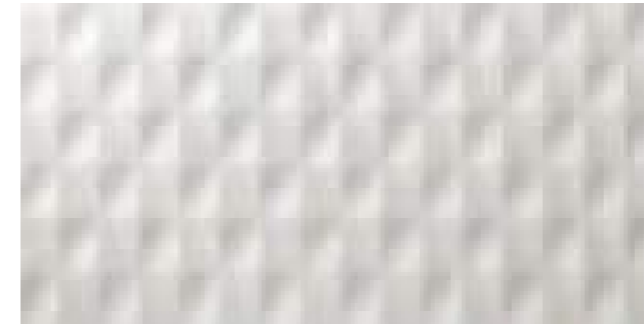
3D Kite ✓ X ↻ 20%

3D Kite White Matt 110
50x110 cm - 19⁵/₈"x43¹/₄"



3D Mesh ✓ X ↻ 20%

3D Mesh White Matt 80
40x80 cm - 15³/₄"x31¹/₂"



3D Angle ✓ X ↻ 20%

3D Angle White Matt 80
40x80 cm - 15³/₄"x31¹/₂"



✓ European Design Reg. N. 003176981 ✗ US Design patent pending



✓ European Design Reg. N. 003176981 ✗ US Design patent pending



SOLIDRange



50x110 cm - 19⁵/₈"x43¹/₄"

Solid White **Matt**
Solid White **Glossy**

± 8,5 mm

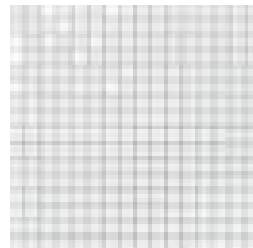
40x80 cm - 15³/₄"x31¹/₂"

Solid White **Matt**
Solid Sand **Matt**
Solid Night **Matt**
Solid White **Glossy**

± 8,5 mm

SOLIDMosaic

Solid White Mosaic
30,5x30,5 cm - 12"x12"



3DTrim tiles

The corner trim matches three-dimensional wall tiles in 10 mm / 11 mm thickness | Lo spigolo si abbina ai rivestimenti tridimensionali di spessore 10 mm / 11 mm | L'angle peut être combiné avec les revêtements tridimensionnels de 10 mm / 11 mm d'épaisseur | Die Kante passt zu den dreidimensionalen Wandbelägen in einer Stärke von 10 mm / 11 mm | El canto se combina con los revestimientos tridimensionales de 10 mm / 11 mm de espesor | Угол сочетается с трехмерной настенной плиткой толщиной 10 мм / 11 мм.

Spigolo 10 mm White Matt *
1x20 cm - 3⁷/₈"x7⁷/₈"

Spigolo 10 mm White Glossy *
1x20 cm - 3⁷/₈"x7⁷/₈"

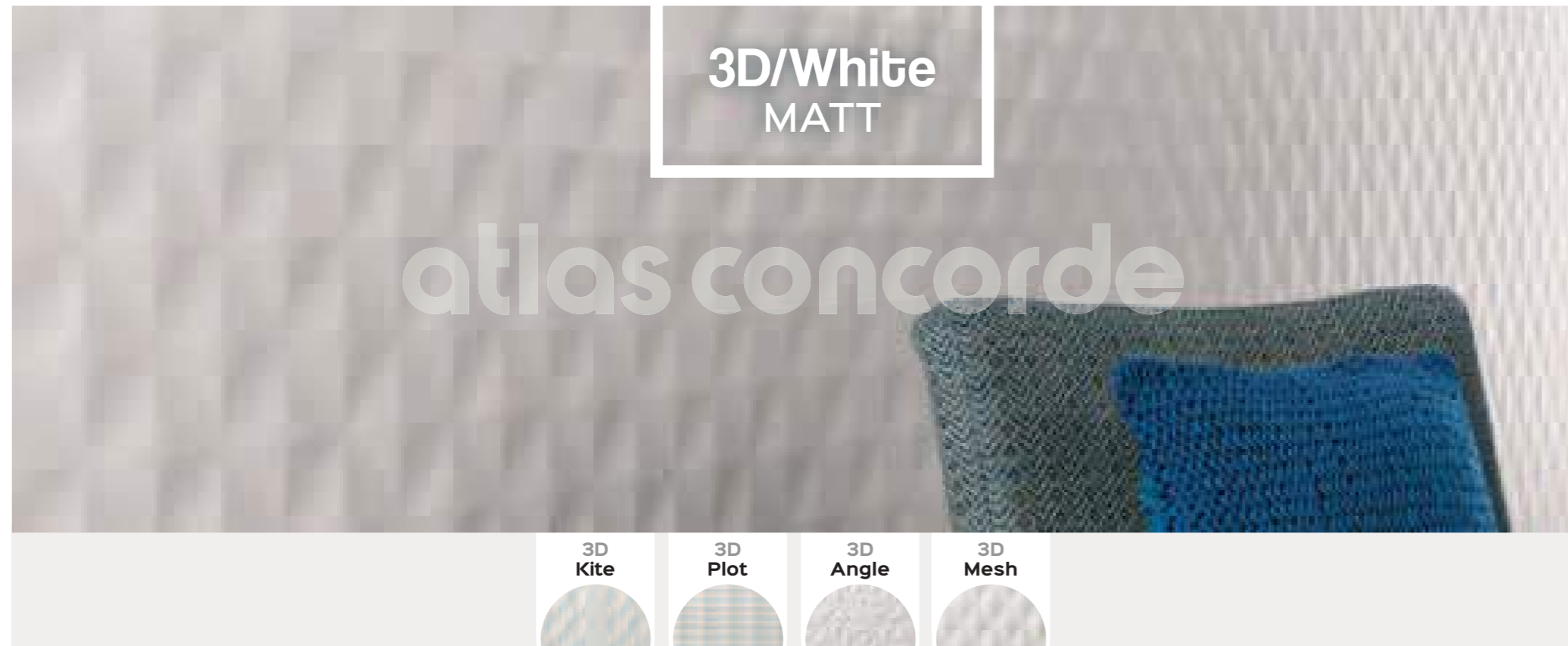
Spigolo 10 mm Sand Matt *
1x20 cm - 3⁷/₈"x7⁷/₈"

Spigolo 10 mm Night Matt *
1x20 cm - 3⁷/₈"x7⁷/₈"

* These parts are supplied to order . I pezzi sono disponibili su ordinazione
Les pièces sont disponibles sur commande . Die Teile sind auf Bestellung lieferbar
Las piezas se hacen por encargo . Изготавливаются на заказ



3DFloors match



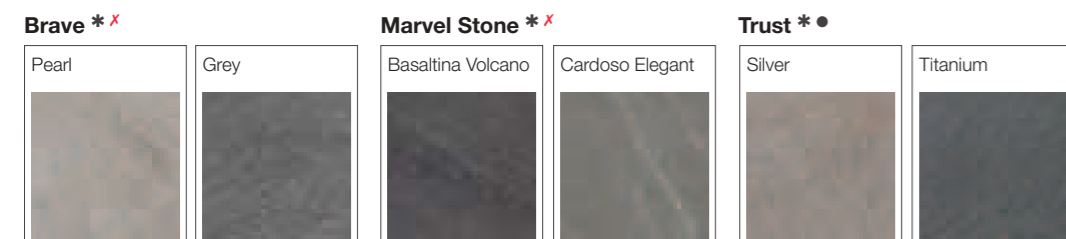
WOOD LOOK > Natural



CONCRETE LOOK



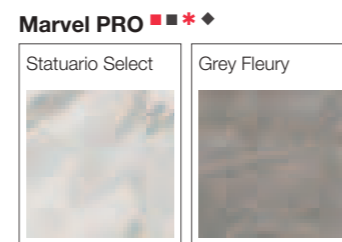
STONE LOOK



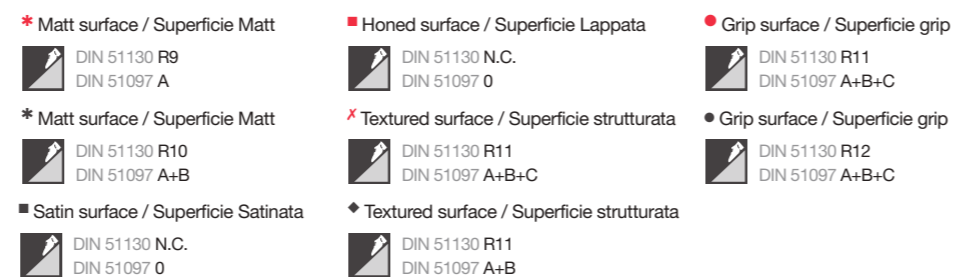
WOOD LOOK > Aged



MARBLE LOOK



Alternative surfaces



WHITE-BODY WALL TILES | RIVESTIMENTI IN PASTA BIANCA

Revêtements en pâte blanche | Weißscherbige Wandfliesen | Revestimientos en pasta blanca | Настенная плитка из белой глины

The LEED standard (Leadership in Energy and Environmental Design) is a rating system dedicated to the development of "green" buildings. Developed by the US Green Building Council and internationally recognised, it points out the necessary requirements to build eco-compatible projects, capable of functioning in a sustainable and autonomous way from an energy point of view, as well as having a low environmental impact throughout their entire life cycle. This system is based on the allocation of credits for each single requirement: the total amount of credits defines the obtained certification level. Also ceramic tiles can contribute to the achievement of LEED points. Ceramiche Atlas Concorde is a member of the US Green Building Council.

Lo standard LEED (Leadership in Energy and Environmental Design) è un sistema di rating per lo sviluppo di edifici "verdi". Elaborato dall'US Green Building Council e riconosciuto a livello internazionale, indica i requisiti per costruire edifici eco-compatibili, capaci di funzionare in maniera sostenibile ed autosufficiente a livello energetico e di avere un basso impatto sull'ambiente durante tutto il loro ciclo di vita. Il sistema si basa sull'attribuzione di crediti per ciascuno dei requisiti: dalla somma dei crediti deriva il livello di certificazione ottenuto. Anche le piastrelle ceramiche possono contribuire al raggiungimento dei crediti LEED. Ceramiche Atlas Concorde è membro dell'US Green Building Council.

Le standard LEED (Leadership in Energy and Environmental Design) est un système pour l'évaluation visant au développement d'édifices écologiques. Elaboré par l'US Green Building Council, il est reconnu au niveau international et précise les critères pour construire des édifices compatibles avec l'environnement, capables de fonctionner de manière durable et autonome d'un point de vue énergétique tout en ayant un faible impact sur l'environnement durant tout leur cycle de vie. Le système se base sur l'attribution de crédits pour chacun des critères. La somme de ces crédits détermine le niveau de certification obtenu. Le carrelage en céramique peut lui aussi contribuer à obtenir des crédits LEED. Ceramiche Atlas Concorde fait partie de l'US Green Building Council.

Der LEED Standard (Leadership in Energy and Environmental Design) ist ein Bewertungssystem, das die Entwicklung "grüner" Gebäude fördert. Ausgearbeitet vom US Green Building Council ist dieser Standard international anerkannt und gibt Grundbedingungen für den Bau von öko-kompatiblen d.h. nachhaltigen und in Bezug auf Energie unabhängigen Gebäuden, die während ihres gesamten Lebenszyklus geringe Wirkung auf die Umwelt haben, vor. Das System beruht auf Credits, die man erhält, wenn diese Grundbedingungen des ökologischen Bauens erfüllt sind. Aus der Summe der Credits bestimmt sich das erreichte Zertifizierungs-niveau. Auch Fliesen können zum Erreichen der LEED Credits beitragen. Ceramiche Atlas Concorde ist Mitglied des US Green Building Council.

El estándar LEED (Leadership in Energy and Environmental Design) es un sistema de clasificación para el desarrollo de edificios "verdes". Elaborado por el US Green Building Council y reconocido a nivel internacional, indica los requisitos para construir edificios eco-compatibles, capaces de funcionar de manera sostenible y autosuficiente a nivel energético y de tener un bajo impacto ambiental durante el ciclo de vida completo. El sistema se basa en la atribución de créditos por cada uno de los requisitos: de la suma de los puntos deriva el nivel de certificación obtenido. También los azulejos cerámicos pueden contribuir al conseguimiento de los puntos LEED. Ceramiche Atlas Concorde es miembro del US Green Building Council.

LEED (Лидерство в области энергоэффективного и экологического проектирования) – признанная на международном уровне сертификационная система оценки зданий по степени экологической чистоты. Разработана Советом экологического строительства США (US Green Building Council) и устанавливает требования к проектированию и строительству зданий с точки зрения энергоэффективности, влияния на здоровье человека и окружающую среду. Система основывается на присвоении баллов по каждому из оценочных параметров, а по сумме накопленных баллов определяется уровень сертификации. Керамические плитки также могут содействовать получению баллов LEED. Ceramiche Atlas Concorde является членом Совета экологического строительства США.



RECYCLED CONTENT. Manufactured with minimum 20% of pre-consumer recycled materials. It can contribute to the awarding of 1 LEED credit.

VOC CONTENT. Contiene oltre il 20% di materiale riciclato pre-consumer e può contribuire al raggiungimento di 1 credito LEED.

RECYCLED CONTENT. Il contient plus de 20% de matériau recyclé pré-consommation et peut contribuer à l'obtention d'1 crédit LEED.

RECYCLED CONTENT. (RECYCLINGANTEIL) Enthält über 20% pre-consumer Recyclingmaterial und kann zum Erhalt von 1 LEED Punkt beitragen.

RECYCLED CONTENT. Contiene más del 20% de material reciclado de pre-consumo y puede contribuir a la obtención de 1 crédito LEED.

СОДЕРЖАНИЕ ВТОРИЧНОГО СЫРЬЯ. В производстве изделий использовано более 20% вторичного сырья, что способствует получению 1 балла LEED.



VOC CONTENT. Low-emitting materials with zero emission of volatile organic compounds (VOC). It can contribute to the awarding of 1 LEED credit.

VOC CONTENT. Materiali a bassa emissione con cessione nulla di sostanze organiche volatili (VOC: "volatile organic compounds"). Può contribuire al raggiungimento di 1 credito LEED.

VOC CONTENT. Matériaux à faible émission avec aucune libération de substances organiques volatiles (VOC: "volatile organic compounds"). Peut contribuer à l'obtention d'1 crédit LEED.

VOC CONTENT. (VOC-GEHALT) Emissionsarme Materialien ohne Abgabe von flüchtigen organischen Verbindungen (VOC: "volatile organic compounds"). Kann zum Erhalt von 1 LEED Punkt beitragen.

VOC CONTENT. Materiales de baja emisión sin aporte de sustancias orgánicas volátiles (VOC: "volatile organic compounds"). Puede contribuir a la obtención de 1 crédito LEED.

СОДЕРЖАНИЕ ЛОС. Материалы с низким или нулевым выделением летучих органических соединений (ЛОС). Содействуют получению 1 балла LEED.

THANKS TO





White Body wall tiles - Rectified monocaliber

Compliant with standards EN 14411:2012 annex L group BIII
 Compliant with standards ISO 13006:2012 annex L group BIII
 Conforme alla norma EN 14411:2012 Appendice L gruppo BIII
 Conforme alla norma ISO 13006:2012 Appendice L gruppo BIII

Rivestimenti in pasta bianca - Rettificato monocalibro

3D WALL DESIGN
 50x110 cm 19 9/16"x43 1/4" \pm 11 mm
 40x80 cm 15 3/4"x31 1/2" \pm 10 mm

SOLID
 50x110 cm 19 9/16"x43 1/4" \pm 8,5 mm
 40x80 cm 15 3/4"x31 1/2" \pm 8,5 mm

Technical features Caratteristiche tecniche	Test Method Metodo di prova	Requirements for nominal size N Requisiti per dimensione nominale N				
		7 cm ≤ N < 15 cm (mm)	N ≥ 15 cm (%)	N ≥ 15 cm (mm)		
Regularity Characteristics Caratteristiche di Regolarità	Length and width Lunghezza e larghezza	ISO 10545-2	± 0,75 (*)	± 0,5 (**)	± 2,0 (**)	
			Thickness Spessore	± 0,5 (**)	± 10 (**)	± 0,5 (**)
				Straightness of sides Rettilinearità degli spigoli	± 0,5 (***)	± 0,3 (***)
	Rectangularity Ortogonalità	± 0,75 (****)	± 0,5 (****)		± 2,0 (****)	
Surface flatness Planarità	ISO 10545-2	c.c. + 0,75 - 0,50	c.c. + 0,5 - 0,3	c.c. + 2,0 - 1,5		
		e.c. + 0,75 - 0,50	e.c. + 0,5 - 0,3	e.c. + 2,0 - 1,5		
			w. ± 0,75	w. ± 0,5	w. ± 2,0	
			EN 14411 annex L (Group BIII) EN 14411 appendice L (Gruppo BIII)		ISO 13006 annex L (Group BIII) ISO 13006 appendice L (Gruppo BIII)	
Structural Characteristics Caratteristiche Strutturali	Water absorption (in% by mass) Massa d'acqua assorbita (come % della massa)	ISO 10545-3	Average >10%. When the average > 20%, this shall be indicated. Individual value > 9% Media >10%. Se questo valore > 20%, deve essere indicato. Valore Singolo > 9%			
Bulk Mechanical Characteristics Caratteristiche Meccaniche Massive	Breaking strength Sforzo di rottura	ISO 10545-4	S ≥ 600 N			
			Modulus of rupture Resistenza alla flessione	R ≥ 15 N/mm ²		
Thermal and Igrometric Characteristics Caratteristiche Termo-Igrometriche	Coefficient of thermal linear expansion Coefficiente di dilatazione termica lineare	ISO 10545-8	Declared value Dichiarare un valore	Test method available Metodo di prova disponibile		
	Thermal shock resistance Resistenza agli sbalzi termici	ISO 10545-9	Declared value Dichiarare un valore	Test method available Metodo di prova disponibile		
	Moisture expansion (in mm/m) Dilatazione all'umidità (in mm/m)	ISO 10545-10	Declared value Dichiarare un valore	Test method available Metodo di prova disponibile		
	Crazing resistance Resistenza al cavillo	ISO 10545-11	Pass according to EN ISO 10545-1 Test superato in accordo con ISO 10545-1	Required Metodo di prova richiesto		
Physical Properties Proprietà fisiche	Bond strength/adhesion for improved cementitious adhesives Adesione a trazione con adesivi cementizi migliorati	EN 1348	Declared value Dichiarare un valore	-		
	Reaction to fire Reazione al fuoco	-	Class A1 or A1 _s Classe A1 oppure A1 _s	-		
Chemical Characteristics Caratteristiche Chimiche	Resistance to household chemicals and swimming pool salts Resistenza ai prodotti chimici di uso domestico ed agli additivi per piscina		Minimum Class B (GB for glazed tiles) Classe minima B (GB per piastrelle smaltate)			
	Resistance to low concentrations of acids and alkalis Resistenza a basse concentrazioni di acidi e alcali	ISO 10545-13	Declared Class Dichiarare una Classe	Test method available Metodo di prova disponibile		
	Resistance to high concentrations of acids and alkalis Resistenza ad alte concentrazioni di acidi e alcali		Declared Class Dichiarare una Classe	Test method available Metodo di prova disponibile		
	Resistance to staining for glazed tiles Resistenza alle macchie piastrelle smaltate	ISO 10545-14	Minimum Class 3 Classe 3 minima			
	Release of dangerous substances: Cadmium (in mg/dm²) and Lead (in mg/dm²) Rilascio di sostanze pericolose: Cadmio (in mg/dm ²) e Piombo (in mg/dm ²)	ISO 10545-15	Declared value Dichiarare un valore	Test method available Metodo di prova disponibile		

3D Wall Design	
± 0,3% ± 1,0 mm	
± 10,0% ± 0,5 mm	
± 0,3% ± 0,8 mm	
± 0,3% ± 1,5 mm	
SOLID ± 0,3% ± 1,5 mm	3D Not applicable non applicabile
10% < E _g ≤ 20 %	
S ≥ 600 N	
R ≥ 15 N/mm ²	
≤ 7 MK ⁻¹	
Resistant Resiste	
≤ 0,06% (0,6mm/m)	
Resistant Resiste	
≥ 1,0 N/mm ² (Class C2 - EN 12004)	
A1	
GA	
GLA	
GHA	
5	
≤ 0,01 mg/dm ² Cd ≤ 0,1 mg/dm ² Pb	

MADE IN ITALY. MADE TO EXCEL.

atlas concorde



MADE IN ITALY

www.atlasconcorde.com

The Made in Italy logo of Atlas Concorde stands for style, quality and ethics. Having firmly adhered to the Ethical Code promoted by Confindustria Ceramica, Atlas Concorde places the Made in Italy logo on all the products designed and produced in Italy, that is to say ceramic tiles, decorations and the majority of special trim tiles. Only a small amount of the latter is manufactured in Spain. Atlas Concorde products are produced using eco-friendly technologies, top quality and safe raw materials with the best working conditions guaranteed for our personnel. For these reasons, Atlas Concorde's Made in Italy is the expression of strong values such as style, design, product quality, and respect for the environment and the people who live in it.



Ceramics of Italy

www.confindustriaceramica.it

The Ceramics of Italy logo is an exclusive identification on ceramic products which have effectively been made in Italy by companies that are a part of the Confindustria Ceramica and who adhered to its Ethical Code. This Code, promoted and created by Confindustria Ceramica, commits all companies to communicate, clearly and with transparency, the origin of their products.

Il marchio Ceramics of Italy contrassegna esclusivamente i prodotti ceramici effettivamente realizzati in Italia da un'azienda associata a Confindustria Ceramica che ha sottoscritto il Codice Etico. Il Codice, redatto dalla stessa Confindustria Ceramica, impegna a comunicare con chiarezza l'origine dei prodotti.

*) The permissible deviation, in % or mm, of the average size for each tile (2 or 4 sides) from work size (W). Deviazione ammissibile, in % oppure mm, della dimensione media di ogni piastrella (2 oppure 4 lati) dalla dimensione di fabbricazione (W).
 **) The permissible deviation, in % or mm, of the average thickness for each tile from the work size thickness (W). Deviazione ammissibile, in % oppure mm, dello spessore medio di ogni piastrella dallo spessore riportato nella dimensione di fabbricazione (W).
 ***) The maximum permissible deviation from straightness, in % or mm, related to the corresponding work sizes (W). Deviazione massima ammissibile di rettilinearità, in % oppure mm, in rapporto alle dimensioni di fabbricazione (W) corrispondenti.
 ****) The maximum permissible deviation from rectangularity, in % or mm, related to the corresponding work sizes (W). Deviazione massima ammissibile di ortogonalità, in % oppure mm, in rapporto alle dimensioni di fabbricazione (W) corrispondenti.
 c.c. The maximum permissible deviation from centre curvature, in % or mm, related to diagonal calculated from the work sizes (W). Deviazione massima ammissibile della curvatura del centro, in % oppure mm, in rapporto alla diagonale calcolata secondo le dimensioni di fabbricazione (W).
 e.c. The maximum permissible deviation from edge curvature, in % or mm, related to the corresponding work sizes (W). Deviazione massima ammissibile della curvatura dello spigolo, in % oppure mm, in rapporto alle dimensioni di fabbricazione (W) corrispondenti.
 w. The maximum permissible deviation from warpage, in % or mm, related to diagonal calculated from the work sizes (W). Deviazione massima ammissibile dello svergolamento, in % oppure mm, in rapporto alla diagonale calcolata secondo le dimensioni di fabbricazione (W).